

The Concongella Times

Welcome Back

Welcome back to a lovely, warm and sunny term 3! Still waiting for the warm part!!

We hope everyone had a lovely winter break!

Hello to Emily

Our new Provisional Psychologist, Emily, has started today! She is having a lovely time getting to know our beautiful kids!

So a big Conco Welcome to Emily!

This Term

Building Works:

Can you believe it?? Our building works are finally about to begin! The builders say that we will start early August and be completed by the beginning of the school year 2023. This has been a difficult process to get to this point, with materials and trades issues all around, we will be getting a new senior room and art room, but it has been scaled back a fair bit from the original designs.

This will impact some areas of the school grounds– see the picture on the next page– but school will operate as close to normal as possible!

School Review:

Every school in Victoria has a review of our strategic direction every 4 years, this year is ours.

This means that we will have a panel of people looking at our data, conducting parent forums, student and staff interviews and working together to define our

next 4 years of improvement work. In this newsletter, you will find a big sheet for your family to record some of your ideas about what is working and what we can improve about our school.

Concongella PS is all of ours, so it would be great if every family had a voice in the future of our school.

There will be more to come about this in the coming month leading up to the review.

We will also be looking for parents to come along and participate in the parent forum on Tuesday 17th of August at 1:30pm.

A good review is an honest and respectful one!

Parent/ Teacher Interviews:

There is a form in this newsletter to book your parent teacher interviews for this term. You can always contact your child's teacher to find a mutually agreeable time to have a chat about your child outside of these dates. Please return your notes by the end of this week.

Uniform Orders:

Please submit any orders for uniforms by the 29th of July for ordering this term. Forms are available at the office. We cannot guarantee stock availability onsite, we do try to keep it stocked.

Also– please write your child's name clearly on all items that they bring/ wear to school– we have a huge pile of lost property and no way of getting it back to the owner if it is not labelled.

Calendar Dates:

Term 3

July

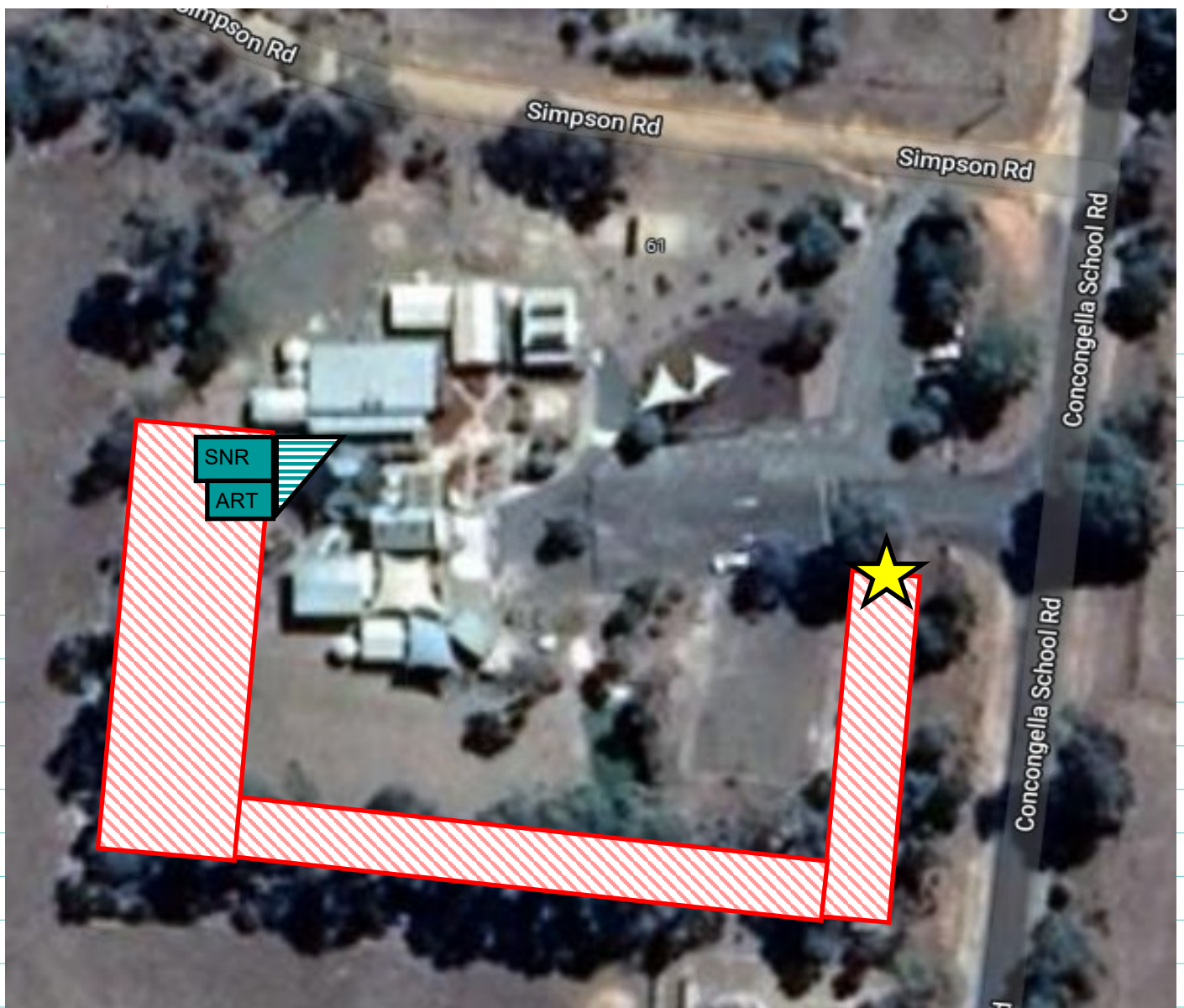
Tues 19th	MARC Van
Wed 20th	150th Committee Meeting 7pm
Fri 22nd	Hands On Learning
Wed 27th	School Council 5:30pm
Fri 29th	Lunch Orders Hands On Learning

August

Tues 2nd	MARC Van
Fri 5th	Hands On Learning
Tues 9th	Somers Camp begins
Fri 12th	Lunch Orders Hands On Learning Comic Art Incursion
Tues 16th	MARC Van
Wed 17th	Review Day 1 Somers Camp ends
Fri 19th	Hands On Learning
Wed 24th	Grade 5/6 Student Leadership day
Fri 26th	Lunch Orders Hands On Learning
Tues 30th	MARC Van

September

Fri 2nd	Hands On Learning
Fri 9th	Pupil Free Day– Staff PD
12th- 15th	Gr 5/6 Ski Camp
Tues 13th	MARC
Fri 16th	Last Day Hands On Learning



Building Works– August 2022– January 2023

As you know, the government awarded Concongella \$1.092 million dollars in last year's state budget– and our works are ready to commence in early August!

The impact of the works has been minimised and largely our school will be able to operate as normal.

Due to budget, materials and trade shortages, the original design has been modified down quite a bit, but it will still be a great addition to our school.

In the above image, I have (very roughly) outlined in red the areas that will be the builders' access and compound– which will be out of bounds for the rest of us. Children will still have full use of both playgrounds, the basketball court and the oval. Please be aware that vehicles will be entering and exiting at the yellow star. We have requested that peak drop off and pick up times are avoided as much as possible, but still be mindful of increased traffic at the entrance to the school.

The teal areas are the actual buildings to be built: a senior classroom and an art room, joined to the main building via decking extending to the existing amphitheatre.

COVID Expectations

From the Department:



I write further to the recent announcements by the Victorian government about public health measures to help reduce the spread of COVID-19 and other illnesses, especially influenza, throughout the remainder of the winter season.

Face masks

It is strongly recommended by the Victorian Department of Health that face masks are worn in indoor settings, with face masks mandatory for those aged 8 and over who are household contacts and attending school. This is because the wearing of masks is effective in reducing the transmission of COVID-19.

What does this mean in practice for schools?

It is the department's expectation that, through to the end of winter, students aged 8 and over and staff will wear masks when in class, except where removing a mask is necessary for clear communication or when a particular activity requires the removal of a mask.

Masks are not required to be worn outdoors but can be worn when physical distancing is not possible. This expectation should not constrain student participation in the full range of school activities, including music, sport and performances.

We understand that parents and carers will play an important role in supporting this expectation. [A short letter is attached signed by each of the 3 school sectors \(government, Catholic and independent\)](#), which explains this will be a consistent expectation across all schools in Victoria this winter.

Schools are seeking your support for this collective effort.

Wearing masks is a simple step we can all take this winter to reduce the number of COVID-19 cases and ensure our schools are as safe as possible.

Exemptions for testing and isolation

The period of time when someone is considered a recently confirmed case and therefore exempt from testing and isolation requirements has been reduced from the previous 12 weeks to 4 weeks.

This means that staff and children who are household contacts of people with COVID-19 are now required to undertake the testing and isolation requirements from 4 weeks after completing isolation with COVID-19. Previously, this exemption period was 12 weeks.

After the 4-week exemption period, students and staff members who are a household contact of a new COVID-19 case, must follow [the rules for household contacts](#), including reporting this to their school.

As part of this they must take 5 rapid antigen tests (RATs) over 7 days and receive negative test results and wear a face mask (if over 8 years old) in indoor spaces.

Families and staff will also have to report being a household contact to their school after this 4-week period.

NEWS FROM THE DESK



Have you signed up for After School Care yet?

Our educators Danielle and Mason are creating some pretty great programs and activities for our kids using their combined skills– there is music, art, dramatic play, outdoor activities and cooking, just to name a few! Get in touch for the link!



Timetable Change

We have had a bit of a change to the timetable as our kids were missing a lot of art sessions due to special days often happening on Fridays. So Art has moved to Tuesday's which required a bit of a shuffle of some other sessions.

We have stated the new timetable this week.

	Monday			Tuesday			Tues-MARC			Wednesday			Thursday			Friday		
	F1	23	456	F1	23	456	F1	23	456	F1	23	456	F1	23	456	F1	23	456
8.00-9.00																		
9.00-9.30	Assembly			LIT	LIT	LIT	LIT	LIT	LIT	LIT	LIT	LIT	LIT	LIT	LIT	LIT	LIT	LIT
9.30-10.00	LIT	LIT	LIT	LIT	LIT	Art	MARC	LIT	Art	LIT	LIT	LIT	LIT	LIT	LIT	LIT	LIT	LIT
10.00-11.00	PAM			LYNETTE			LYNETTE			KARIN			PAM			FELICIA		
11.00-11.20	NUM	NUM	NUM	NUM	ART	NUM	NUM	Art	MARC	NUM	NUM	NUM	NUM	NUM	NUM	NUM	NUM	NUM
11.20-12.05	LIT	LIT	LIT	LIT	LIT	LIT	LIT	LIT	LIT	LIT	LIT	LIT	LIT	LIT	LIT	LIT	LIT	LIT
12.05-12.50	KARIN			PAM			PAM			FELICIA			KARIN			PAM		
12.50-1.15	FELICIA			KARIN			KARIN			PAM			FELICIA			KARIN		
1.15-1.40	FELICIA			KARIN			KARIN			PAM			FELICIA			KARIN		
1.40-2.25	DC	HPE	SCI	ART	WB	Chi	ART	MARC	CHI	HPE	DC	HUM	Chi	AUSLAN	HPE	KG	SCI	INT
2.25-3.10	RRRP			INT			RRRP			RRRP			AUSLAN			SCI		
3.10-3.45	B	U	S	B	U	S	B	U	S	B	U	S	B	U	S	B	U	S

2022 TERM DATES

- TERM 1: 31/01/2022 - 08/04/2022
- TERM 2: 26/04/2022 - 24/06/2022
- TERM 3: 11/07/2022 - 16/09/2022
- TERM 4: 03/10/2022 - 20/12/2022

MARC VAN

Our next MARC Van for the year will be on Tuesday 2nd of August– Please bring your books back to exchange.



Fortnightly Bakery Lunch

Next Bakery Lunch

Friday 15th July

Return slip by Thursday 29th July

If you do not return your slip to school on the Thursday, your child can not have a bakery lunch– **please do not take to the bakery.**